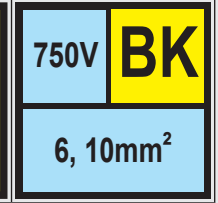
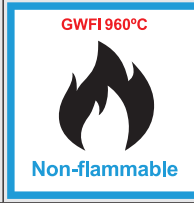
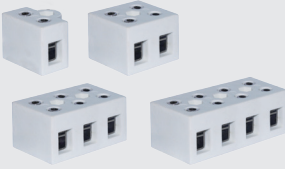
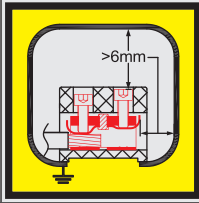
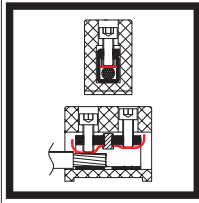


Very high temperature steatite connection blocks, 750V range



Not protected against accidental electric contact, nickel terminals, stainless steel screws, nickel pressure plate



6mm²

BK061 	46 gr.	SOLID CONDUCTOR 6.5-9.5mm 6mm ² / 4mm ² / 2.5mm ² AWG10 / AWG12 / AWG14 STRANDED CONDUCTOR 6.5-9.5mm 4mm ² / 2.5mm ² AWG12 / AWG14	BK062 82 gr.
BK063 	120 gr.	0.5 N.m 750V M3 41A Permanent: 500°C/930°F Peak: 700°C/1290°F 950°C/1740°F*	BK064 158 gr.

10mm²

BK101 	50 gr.	SOLID CONDUCTOR 6.5-9.5mm 10mm ² / 6mm ² / 4mm ² AWG8 / AWG10 / AWG12 STRANDED CONDUCTOR 6.5-9.5mm 6mm ² / 4mm ² AWG10 / AWG12	BK102 90 gr.
BK103 	130 gr.	0.8 N.m 750V M3.5 57A Permanent: 500°C/930°F Peak: 700°C/1290°F 950°C/1740°F*	BK104 170 gr.

* : Fire conditions, product must be replaced after it.



Page (.pdf)



Drawing 2D (.dwg)



Drawing 3D (.stp)