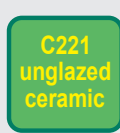
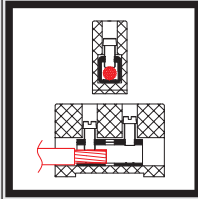


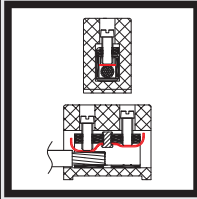
Steatite connection blocks 450V range



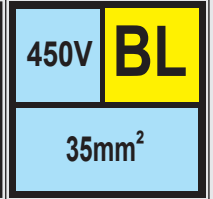
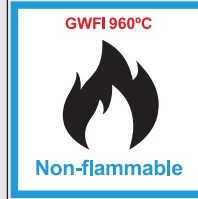
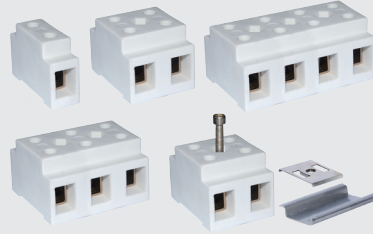
Protected against accidental electric contact, **stamped** brass terminals, nickel plated steel screws.



Without pressure plate



With pressure plate



35 mm² direct pressure screw Mounting on 35mm Din rail is possible

BL351 	97 gr. 	SOLID CONDUCTOR 35mm ² / 25mm ² / 16mm ² / 10mm ² AWG2 / AWG4 / AWG6 / AWG8 	BL352 219 gr. 	
		STRANDED CONDUCTOR 25mm ² / 16mm ² / 10mm ² AWG4 / AWG6 / AWG8 		
BL353 	341 gr. 	 2.5 N.m 450V M6 125A Permanent 230°C / 450°F Peak 450°C / 840°F	BL354 463 gr. 	

35 mm² indirect clamping screw, with pressure plate Mounting on 35mm Din rail is possible

BL351P 	100 gr. 	SOLID CONDUCTOR 35mm ² / 25mm ² / 16mm ² / 10mm ² AWG2 / AWG4 / AWG6 / AWG8 	BL352P 225 gr. 	
		STRANDED CONDUCTOR 25mm ² / 16mm ² / 10mm ² AWG4 / AWG6 / AWG8 		
BL353P 	350 gr. 	 2.5 N.m 450V M6 125A Permanent 230°C / 450°F Peak 450°C / 840°F	BL354P 475 gr. 	



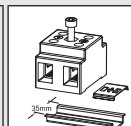
Page (.pdf)



Drawing 2D (.dwg)



Drawing 3D (.stp)



35mm Din rail mounting clip

Reference
66AT410650